

Aaton Arcan-w v2.14



- An Aaton WinMob application which remotely controls Cantar from a PDA
- sets input and output routings
 - displays modulometers and fader gains
 - edits scenes, takes, notes and track names

Installation

Hardware The Win-Mobile 5 or 6 PDA must feature a 640*480 VGA screen (not a 320*240 QVGA screen), and an MS Bluetooth stack (not a Broadcom stack), e.g. Qtek 9000, DELL Axim-51v, HTC X7500, Fujitsu Loox N560.

Software Download 'rcan_214.cab' from the Aaton web site and copy it through USB into a folder of the PDA. Open this folder and execute 'rcan_214.cab'.

Connection to Cantar

Cantar side

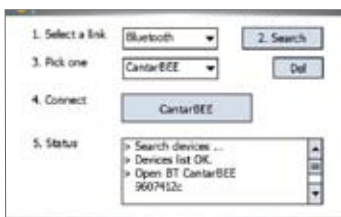
Go to TECH.14, and select 'Serial com: PDA'.

Note: the 3 meter range transmitter of Cantar is low power (idle: 0.1mA, connecting: 4mA), you can leave it active at all times.

PDA side

Click Arcan's icon in the PDA 'programs' screen.

Select Bluetooth.



Search Click the search window, Bluetooth devices will appear in the Pick one window.

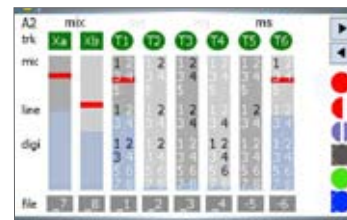
Pick one The list of Cantar IDs in memory is shown. Click the desired one.

Connect The last selected Cantar ID will show at next connection.

Status this window is used for maintenance only.

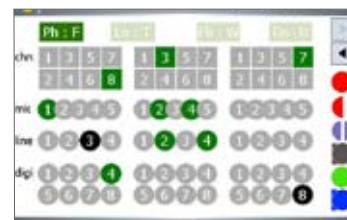
Operating Screens

While the Cantar recorder toggles between the BROWSE, STOP, TEST, PPR to REC positions, Arcan displays different screens: ins and outs routings / scene, take, track-name and comment editor / modulometers.



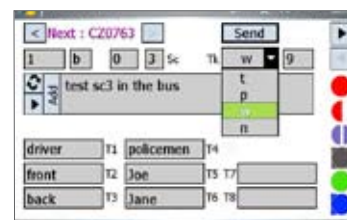
1 Input grid

Armed tracks.
M/S status.
Modulometers.
Note: Input grids can only be modified in STOP position.



2 Outputs maps

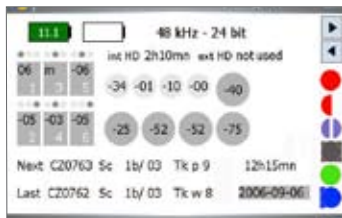
Recorded signals show in green, non-recorded ones (directly sent to outputs), show in black. Note: Output maps can only be modified in STOP position.



3 Metadata insertion

Scene, take, comments and track-names (with auto completion and text insertion), can be edited in REC, PPR and BROWSE.

Arcan screens

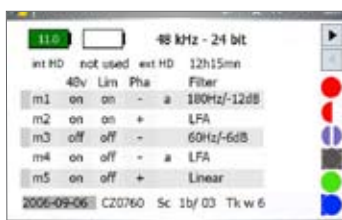


4 Physical param.

top: battery voltage, sample rate and bit depth, internal/external disk recording time.

middle: phantom, limiter, phase, high-pass filter in STOP position. Prefader/mixer gains in TEST, PPR, REC positions.

bottom: filetags, scene, take, day and time.



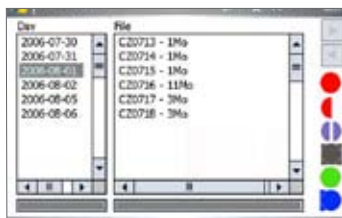
5 Mic settings

Visible at a glance they are not modifiable from Arcan.



6 File listening

The marker shows the location of the played audio between two 'elapsed time' tabs set by arrows and jog.



7 File editing

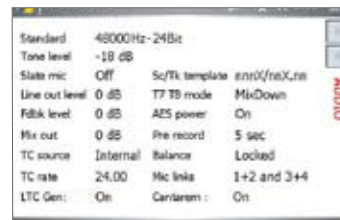
The Project is sorted by working days in the BROWSE screen.

Select a day then browse the files; the size of the first track of the take is displayed.

Select a file to edit the scene, take, comments, file-names, etc. ([tab] to go from field to field).

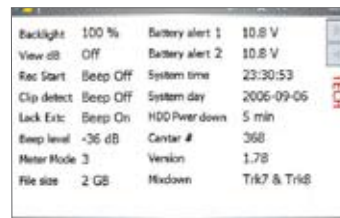
Auto completion guide A word is validated by [space]; go to another box; 'send' to Cantar; go to another page. If a correlation is found between the beginning of a word and the library, stored words are shown. Hit a word in the list or select it with arrows, then 'enter'. To eliminate an obsolete word from the library, make it show on the list, select it with up/down keys and press "Suppr" (keyboard [Fn*Del], virtual keyboard [CAP] then [Del]). To see the full database, click and maintain the pressure.

Operand Screens



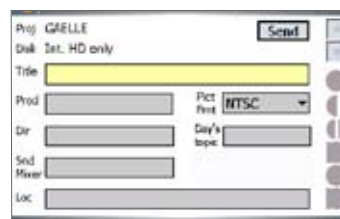
1 AUDIO/LTC

Sound and LTC settings are visible at a glance. They are not modifiable from Arcan.



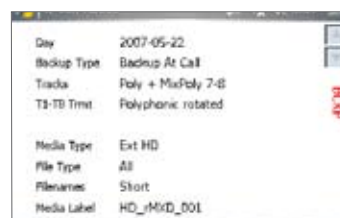
2 TECH

Technical settings are visible at a glance. They are not modifiable from Arcan.



3 Sound-Report

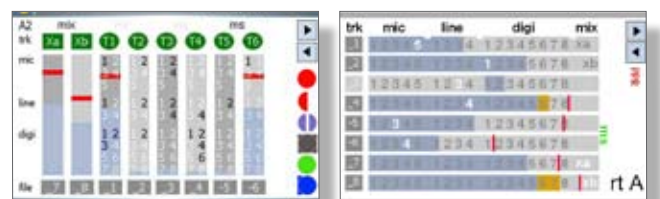
Enters and modifies the Sound report headers. Several entries per day are possible, a new ALE and PDF page is opened on each new header item.



4 BACKUP

Backup settings are visible at a glance. They are not modifiable from Arcan.

note: [MainSelector] on PPR, Arcan can toggle between BROWSE, STOP, TEST, PPR and REC.



Vertical or horizontal bargraphs, what is your preference? (the horizontal version is not yet available).