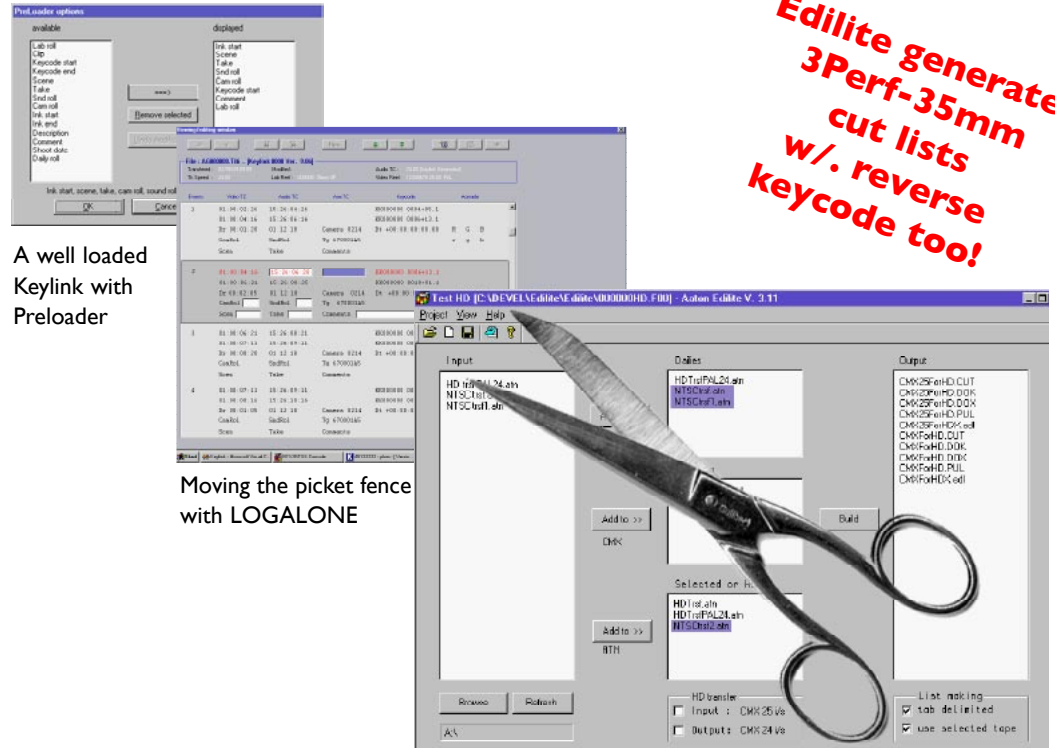


# Aaton video post: Decalog

- Edilite, the 3Perf-abilis neg cut master
- Logalone, the transfer database rescuer
- Preloader, the go-between



**Edilite generates 3Perf-35mm cut lists w/. reverse keycode too!**

A well loaded Keylink with Preloader

Moving the picket fence with LOGALONE

Feeding Henry (and neg. cutters) with EDILITE

### Edilite

Edilite delivers keycode cut and pull-lists from Video edls generated by Avid media composers or Apple FCP. It is the only negative management software able to generate 100% accurate pull and cut lists for 35mm 4Perf and 3Perf negatives. Provided the telecine transfer lists are generated by a Keylink-ip, Edilite masters descending 3Perf Keycodes generated by rewind short ends and split 1000 foot rolls. The Edilite claim to fame is its ability to translate the edl of the first (best light) transfer into a new edl carrying the VideoTC of the selected transfer, while insuring that all edits and motion effects (M2s) are accurately imported into Flame, Henry, etc. Edilite also converts SD into HD edls.

### LogAlone

RS-422 connected to a VTR or not, Logalone ensures all possible additions and modifications to telecine transfer lists. While holding Keycode, VideoTC, and AudioTC linked together, Logalone eliminates overlaps, fine tunes in/out points, syncs AudioTC, and introduces the take breaks forgotten during the film transfer.

### Preloader

Preloader converts frame indexed, tab delimited spreadsheets into files that Keylink imports to insert VITC+Characters, and generate video indexed transfer lists. .

*Hardware: the three Decalog applications run in Windows 2000/XP PCs with an USB socket receiving an Aaton dongle.*

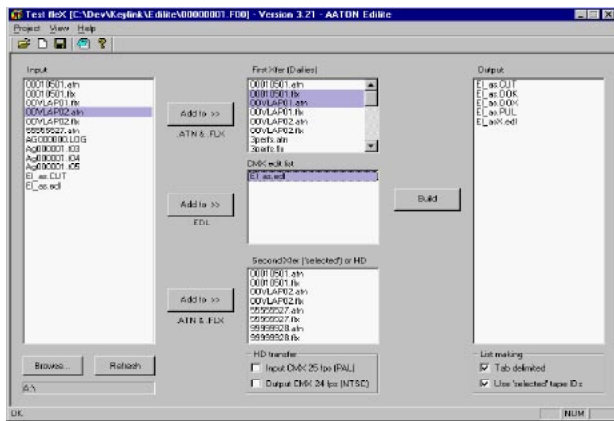
## Edilite

Edilite generates 16mm and 35mm 4Perf and 3Perf cut and pull lists using the .atn and .flx transfer lists out of a Keylink telecine code reader and the CMX3600.edl files from NLE machines. It also builds a new edl carrying the Video-TC2 of the 'selected' transfer – be it SD or HD – necessary to perform an online auto-assemble respecting the motion effects of the SD edits carrying the Video-TC1 of the first transfer. Edilite handles PAL 24@25, 25@25 (not 24+1), NTSC 24@29.9 and 30@29.9 df/ndf edls. With the HD option, the PAL/NTSC edls are converted to the frame rate and timecode of the 'selected' HD tape.

Edilite runs in demo mode on the five first lines of a CMX edl if you have no Aaton Decalog USB dongle. On the PC desktop, click the Decalog/Edilite icon, then key-in a Project ID and a film Title.

## (1) Film negative cut & pull lists

- Insert the floppy carrying the .ATN (or .FLX) transfer files, click 'Refresh' to read the floppy. Click 'Add to' to copy the .ATN and .FLX highlighted files into the 'dailies' box.



- Insert the floppy carrying the .EDL cmx files, click 'Refresh' to read the floppy. Click 'Add to' to copy the .EDL highlighted files into the 'CMX edl' box.

- To generate pull/cut lists, highlight the relevant .ATN and .FLX files in 'dailies' and the .EDL files in 'CMX edl', then 'Build'.

This delivers a motion-effects corrected Keycode cut-list sorted by edits, and a pull-list sorted by lab-reel. Double click the file or click on the notepad icon in the tool bar to view the content. Previous and next take overlaps are shown in the lists to warn the operator about the reused frames to be duplicated (if need be) prior to the negative cutting. Lists can be 'space' or 'tab' delimited, see 'List making' bottom right of the screen. To export a file, insert a diskette, hilite xx.CUT and xx.PUL, then click on the floppy icon in the tool bar.

## (2) Selected Transfer new EDL

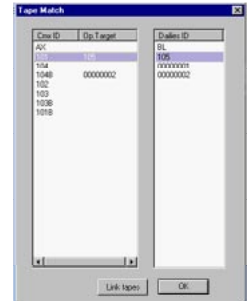
To generate a rejuvenated 'selected' .EDL, highlight the .ATN files of the first transfer (dailies box), the .EDL files of the cmx (editing box), and the .ATN files of the second transfer (selected box), then [Build]. An X is added to the .EDL prefix to differentiate the video-TC1 of the first transfer and the video-TC2 of the 'selected' transfer.

This delivers a selctdX.EDL with motion effects and edit points carrying the video-TC2 of the second transfer. Several dailies .ATN and .EDL cmx files can be concatenated by highlighting them.

Note-1 Missing Keycodes : a list of the selected transfer missing images is provided for the colorist to perform a more boundary generous re-transfer of some 'selected' takes; these new 'selected' .ATN files are then added to the former ones for Edilite to build the final SelctdX.EDL.

Note-2 Tape-Match : if some video TCs repeat themselves on several video tapes, the TapeMatch window helps the operator to manually match their tape IDs.

Note-3 : the 'selected' transfer .EDL can either carry the IDs of the original tapes or the tape IDs of the second transfer; see 'List making' bottom right of the screen.



The Link auto-matches tape IDs. The operator can also drag the Dailies ID onto the corresponding CMX tape.

## (3) HD/SD editing

**Case one:** First transfer is SD, PAL/NTSC. Keylink delivers an .ATN, the editor generates an SD edl, the 'selected' HD transfer is then made at 24, 25, 30 i, sf, p, etc., Keylink w/. HDK292 inserter delivers HD signed .ATN files. The 'build' is done as in paragraph 2, Edilite generates an HD modified .EDL cmx file.

**Case two:** NTSC first transfer is simultaneous SD 29.97 and HD 23.98, Keylink delivers an ATN; the editor generates a classic edl at 29.97. Since the HD transfer is already made, the 'build' is done by importing the same first transfer .ATN in both the 'dailies' and the 'selected' boxes. *The screen bottom HD selection box should be 'Output: CMX 24fps'.*

**Case three:** PAL first transfer is HD at 24fps, Keylink delivers an HD24 ATN. The HD24 signal is then down-converted and speeded up to PAL25 by an HD-Cam which generates its own Video-Tc 4% shifted to the 00h reference. This makes the editor deliver a PAL25, 00h referenced edl. Since the HD transfer is already made, the 'build' is done by importing the first transfer ATN in both the 'dailies' and the 'selected' boxes. *To let Edilite cope with the shifted 00h referenced Tc, the screen bottom HD selection box should be 'Input: CMX 25 fps'.edl.*

## Logalone

Logalone displays the transfer files of a film project. Modifications, if any, are stored in the AatonRoot database along with the original transfer data. This database is later converted into ASCII transfer lists.

## AatonRoot

AatonRoot stores all the transfer files of a film title, up to 60 hours of film on a 1.4Mb floppy. It is used to carry the Keylink database into Logalone.

Should you have a problem, email the AatonRoot of the questionable file(s) by moving it in 'selected' and clicking 'HotLine'. Join a text indicating what's wrong to <keylink-support@aaton.com>.

## File Merging

Lightworks and Avid NLEs request one VideoTape ID per file, you should only merge and ASCII convert the files related to the 'video tape du jour'. To speed up the selection, key the video tape ID in the tape field, all concerned files are moved in one go. To merge different VideoTape ID files, move them into the 'selected' window then click 'list building'.

## File Devalidation

Redundant files (e.g. tests, incorrectly timed transfer, etc.) can be removed from the post-production chain, drag them into the 'unused files' box.

**Breaks:** select 'Keycode only' to ignore AatonCode breaks stored in the AatonRoot.

## Batch editing

Select a file with [up/down] click 'view', the View-Edit screen shows.

**Clear Overlaps:** be it telecine controller misbehaviour or any other cause, transfer lists may show Video-TC overlaps, 'Clear Overlaps' reduce them to the standard one-frame accepted by NLE and CMX editors.

**Move-up:** in-points are moved by N frames, the overlap protection limits the 'move-up' action to the former event out-point.

**Clear Underlaps:** due to in-camera TC late break detection, an up to two sec. gap can show between event 'n' out-point and event 'n+1' in-point; 'Clear Underlaps' move these points up or down to reduce the gap to zero frame.

## Event specific editing

**Event Devalidation:** by un-marking the 'event' validation button in the right control window the devalidated event shows in grey and will not be printed nor listed in the ATN, FleX, etc., it can later be re-validated.

**Text Edition:** arrow keys scroll Scene, Take, Cam-roll and Snd-roll fields for the operator to modify them. Note that the event numerical order is replicated in the 'Sc' field if there is no prior scene ID entry.

**BorderMover:** key [TAB] to hilite the top two lines and move in/out points with horizontal arrows to shift the border backward/forward. On each keystroke, VideoTC, Keycode and AudioTC in/out points are all moved together. The move is one video frame for 24@25, 25@25 and 30@30 transfer; it is five video frames (A-frame to A-frame) for «3&2 pull-down» NTSC transfer; twenty five video frames for «24+1 pulldown» PAL transfer:

[Ctrl+ arrow] makes the move 240 frames at a time. If

the two events are 'Linked', BorderMover shifts the in/out points into the preceding (following) event. To respect the CMX standard, common-frame overlap is the norm.

**Event Creation:** any event can be split into two; the borders of the split can be moved to the desired point. The operation can be repeated ad libitum, an event can thus generate as many events as needed.

**AudioTC modification:** if for some reason the AudioTC values are not correct or not

meaningful, e.g. PC clock instead of AatonCode or digislate, go to the sound field and key-in the desired in-point value (the out-point follows). You also can eliminate the Audio-TC. The same procedure applies to AuxTc.

## Ascii transfer list selection

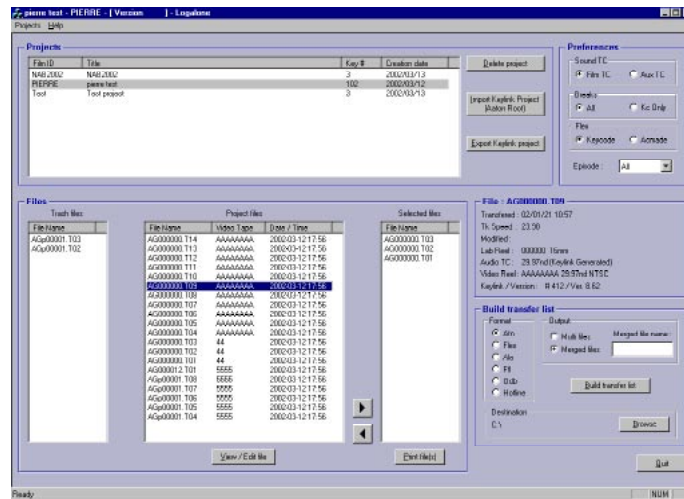
**ALE:** can be directly imported into Avid film composers.

**ATN:** stores Acmade & Keycode, both Film & Aux-TC. Inserts a new header each time a transfer parameter is modified (e.g. 24/25 camera fps changes). Protected by check sum against 'text' modifications, ATN is the list to use with Edilite. ATNs are imported into Avid Film Composers through AvidLogExchange v.2.5 up.

**FleX:** Keylink stores both Keycode and Acmade numbers, but as they share the same field in FleX lists, select one or the other in the preference menu before building this list. Keylink stores both (Cam/Slate Sound TC and Auxilliary-TC, but there is only one sound field in FleX, you must 'prefer' one. Note: the Sound field carries the Audio-TC extracted by Keylink from the film or from the slates, the Auxilliary field carries the timecode which is sent to the auxilliary LTC input.

**FTL:** for Evertz compliant NLEs.

**ODB:** for LightWorks.

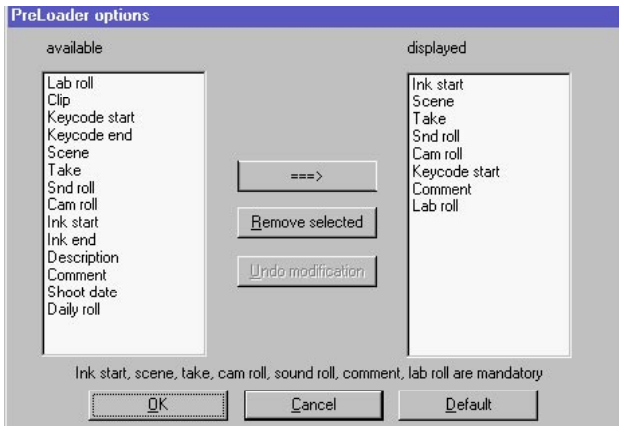


# Decalog-Preloader

## Preloader

PreLoader generates ScriptLogs i.e. frame indexed lists to be imported into Keylink before the transfer session.

To make ScriptLogs for Keylink-IP, you can either import transfer lists such as FLeX,ALE, etc., modify and export them under the .LOG format, or create them from scratch in the preloader tables.



For better legibility of the table only relevant fields should be selected. To insert or delete a line in the list, hilite the desired one then [Insert] or [Del]; an inserted Acmade# must lie between its two neighbours. To modify already recorded files from a floppy disk, click [Open]. To copy the file on a floppy disk, click [Save].

The footage 'ink' format can be [4 - 4&fr], [3 - 5&fr] or [2 - 6&fr].

Ink start	Scene	Take	End roll	Cam roll	Keycode start	Comment
FFF0-0000500					RZ 34 0287 54956.15	Reverse shot
FFF0-00135.08	2	2	2	2	RZ 34 0287 54626.03	
FFF0-00185.00	3	3	3	3	RZ 34 0287 54716.19	
FFF0-00235.29	4	4	4	4	RZ 34 0287 54836.04	
FFF0-00295.38	555555	555555	5555	5555	RZ 34 0287 54956.13	
FFF0-00375.35					RZ 34 0287 55116.10	
FFF0-00385.28	777777	7	7777	7777	RZ 34 0287 55136.03	
FFF0-00445.12					RZ 34 0287 55246.07	

### Importing ScriptLogs into a Keylink transfer session.

Insert the Preloader made floppy disk before starting the transfer session by clicking 'Footage&frame' and 'Import' in the Keylink screen.

## Decalog Software (to be installed first)

Latest softwares are available on <http://labs.aaton.com/>

### Download

- o Copy 'dklnn.exe' on a blank DOS 1.4Mb diskette. Do not open the file.

### Installation

- o Close the former Decalog applications.
- o Insert the diskette in the PC A-drive and click on the 'dklnn.exe' icon: the 'installer verify' runs for one minute.
- o After acceptation of the license agreement (pop-up menu shows Decalog as the destination), click 'Install', the Decalog icons show.

## Maintenance/Update (to be installed second)

Make sure the Aaton Decalog dongle is plugged into the USB socket.

### Download

- o Copy 'dmunnn.exe' on a blank DOS 1.4Mb diskette. Do not open the file.

### Installation

- o Insert the diskette in the PC A:drive and click on 'dmunnn.exe'
- o click OK, the Decalog suite is ready to work.